







**WaterflowControl**

# WFC-FH-PBH420

## Bag Filter Housing

### Contact Us:

-  (02) 9948 0699
-  [info@waterflowcontrol.com.au](mailto:info@waterflowcontrol.com.au)
-  [www.waterflowcontrol.com.au](http://www.waterflowcontrol.com.au)
-  D1/20 Picrite Close, Pemulwuy, NSW



# PBH420 Bag Filter Housing

WFC PBH Series is a Standard Bag Vessel Assembly to keep your system on stream longer by reducing bag filter-change time. They are made of lightweight corrosion resistant polypropylene to give you all the strength you need without the weight.

Install as a duplex system for totally uninterrupted flow rates.

All PBH Series Vessels come complete with gauge, wrench and 3/8" drain valve. The single large ACME thread closure ensures quick opening and positive sealing.

Filter bags are available in polypropylene felt, absolute-rated high efficiency polypropylene and nylon mono filament mesh—ideal for filtering and straining applications from 1-800 microns.

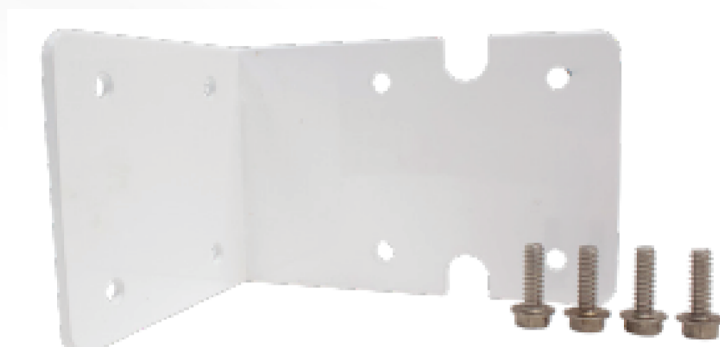
Molded from rugged reinforced polypropylene, Bag Vessel Filter Housings offer outstanding chemical compatibility and are ideal for use in a variety of low-flow applications. These applications include residential prefiltration, food service, along with commercial and industrial applications for water filtration and chemical filtration. They are equipped with a black reinforced polypropylene cap.

## Features and Benefits

- Lightweight, corrosion resistant polypropylene construction gives you strength without weight
- Choice of 10" and 20" housings
- Available in 1" and 1-1/2" NPT sizes
- Comes complete with gauge, wrench and 3/8" drain valve
- Maximum Pressure - 100 psi (6.2 bar)
- Light enough to be portable
- Economically priced

## Specifications

- **Housing** - Polypropylene
- **Cap** - Polypropylene (HFPP)
- **Gauge** - Bismuth brass (lead-free)
- **Vent plug** - Polypropylene
- **Drain plug** - High density polypropylene
- **Ball valve** - PVC/Buna-N seals
- **Basket** - Polypropylene
- **O-Ring** - Buna-N
- **Temperature Rating** - 40-100 °F (4.4-37.8 °C)
- **Product Code:** WFC-FH-PBH420-40



Bracket Sold Separately

## Specifications and Performance

Model #	Pipe Size	Maximum Dimensions	Initial $\Delta P$ (PSI) @ Flow Rate (GPM)
PBH-410-1*	1" NPT	13.13" x 4.25" (334 x 108 mm)	1 psi @ 15 gpm (0.07 bar @ 57 Lpm)
PBH-420-1**	1" NPT	23.38" x 7.25" (594 x 184 mm)	1 psi @ 15 gpm (0.07 bar @ 57 Lpm)
PBH-410-1.5*	1 1/2" NPT	13.63" x 4.25" (346 x 108 mm)	1 psi @ 15 gpm (0.07 bar @ 57 Lpm)
PBH-420-1.5**	1 1/2" NPT	23.88" x 7.25" (607 x 184 mm)	1 psi @ 15 gpm (0.07 bar @ 57 Lpm)

## Pressure Drop VS Flow Rate

