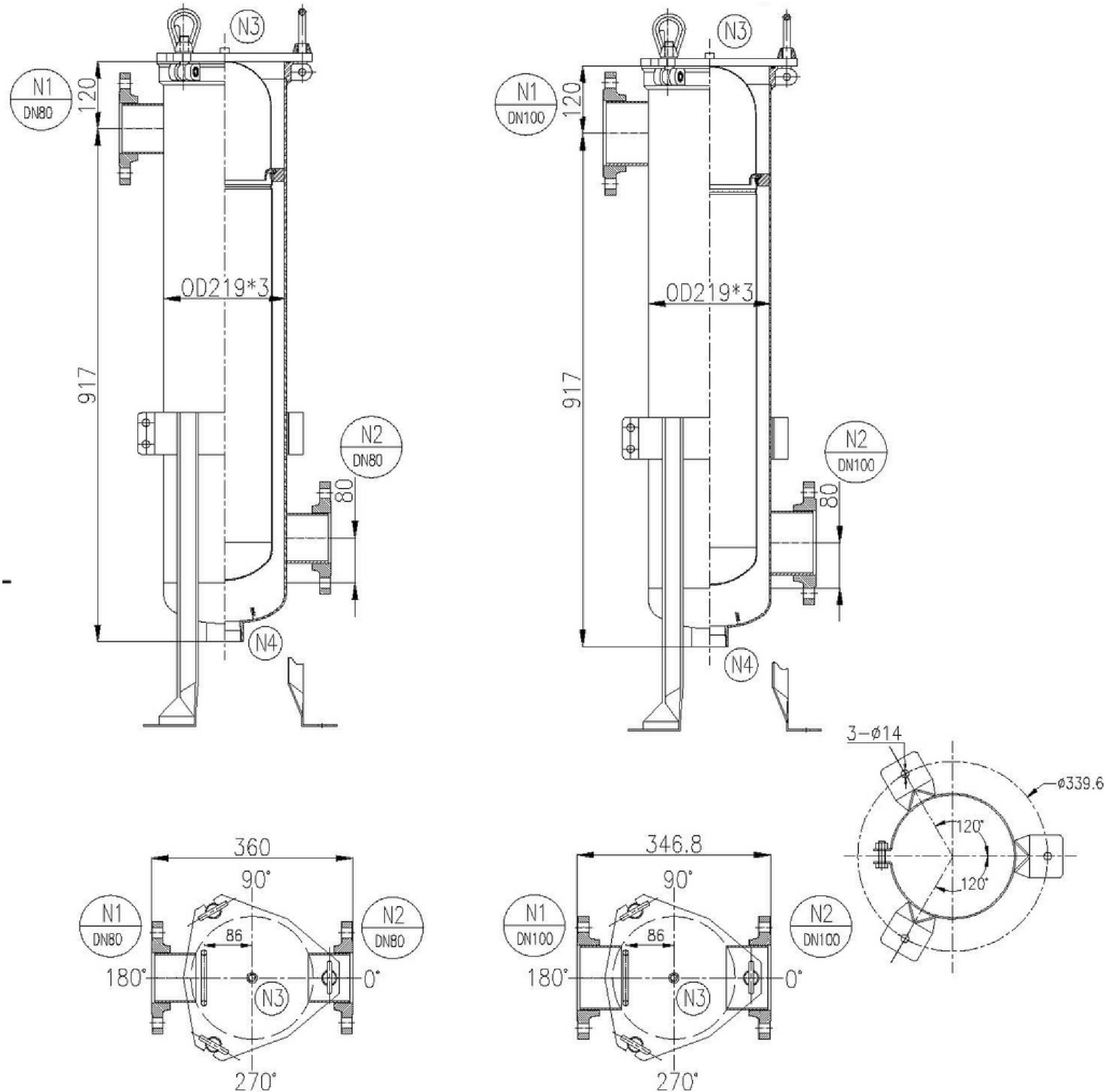


WFC SINGLE BAG FILTRATION SYSTEM 80MM



DESIGN DATA TABLE							
DESIGN PARAMETERS			SUPERVISE RULE				
PARAMETER NAME	HOUSING	JACKET	DESIGN CODE	GB / T 150.1~150.4 - 2011			
M.O.P (Mpa)	0.8	—	MANUFACTURING	—			
Design pres. (Mpa)	1.0	—	MANUFACTURING AND INSPECTION REQUIREMENTS				
Max. operating temp (°C)	0~80	—	Steel plate / Standard for main pressurised components	S316/GB/T 24511-2009			
Design temperature	100	—	Materials / Standards for main forgings	S316/NB/T 47010-2000			
Medium	/	—	Materials / Standards for main opening take-over	S316/GB/T 14976-2012			
Medium properties	/	—	FORM OF JOINT	Except as indicated in the drawing, the type and size of the welded joint shall be as specified in HG/T20583-2011; the fillet size of the fillet weld shall be as specified in the thickness of the thinner plate; the flange welding shall be as specified in the corresponding flange standard; the rest shall be as specified in GB/T985-2008.			
Medium density (kg/m³)	/	—					
Viscosity (cps)	/	—	SOLDERING	WELDING BETWEEN XX & XX	WELDING ROD NUMBER		
Material of main pressure components	304L	—		Between carbon steel	—		
Corrosion allowance (mm)	0	—		Between SS - 304	A102		
Joint efficiency	Class A	0.85	Between SS-316L	A132			
	Class B	0.85	Between CS & SS	—			
Volume (L)	/	—	NONDESTRUCTIVE TESTING	Type of welded joint	Detection rate	Testing STD.	Qual. Level
Filter accuracy (um)	/	—		A, B	Housing	—	NB/T47013.2-2015
Filter area (m²)	/	—	A, B	Jacket	—	NB/T47013.2-2015	—
Recommended service life	10	—	TEST	TYPE OF TEST		Housing	Jacket
Approx. dry weight (kgs)	/	—		Hyd. test pres. (Mpa)	1.25	—	
Approx. wet weight (kgs)	/	—	Pneu. test pres. (Mpa)	—	—		
Surface finish	Glass bead blasting	—					
Painting, packaging and shipping	JB/T4711-2003	—					
Design flow rate (m³/h)	/	—					

TECHNICAL REQUIREMENTS:

1. The Orientations of the nozzle and the pedestal shall be as shown in the top view.
2. The weld surface should be smooth and compact, no porosity, crack, scar and other defects.
3. Test pressure: full water pressure test 1.25 MPA 30 minutes, no leakage, no abnormal sound and visible deformation as qualified.
4. The content of chloride ion in water should not be more than 25mg/L in hydraulic pressure test, and the water in cylinder should be drained after the test.
5. The design service life refers to the service life of the vessel which is determined according to the uniform corrosion amount of the limited medium to the metal wall is not greater than the corrosion allowance under the normal smooth operation and the normal maintenance conditions.

NOZZLE SCHEDULE

MARK	NOMINAL SIZE	PRESSURE RATED		CONNECTION STD.	TYPE-FACE	SERVICE or NAME	QTY	REMARK
		PN	CLASS					
N1	DN80 / 100	/	150	ANSI B 16.5	PL-RF	Inlet	1	/
N2	DN80 / 100	/	150	ANSI B 16.5	PL-RF	Outlet	1	/
N3	1/4"	/	/	BSPP	F-BSPP	Gauge & Vent	1	/
N4	2"	/	/	BSPP	F-BSPP	Drain	1	/

TYPE OF FILTER ELEMENT	NUMBER OF FILTER ELEMENT	SIZE OF FILTER ELEMENT	GASKET/O-RING MATERIAL	SURFACE FINISH
Bag	1 pcs	#2 (Ø17"×32")	Silicone	Glass bead blasting